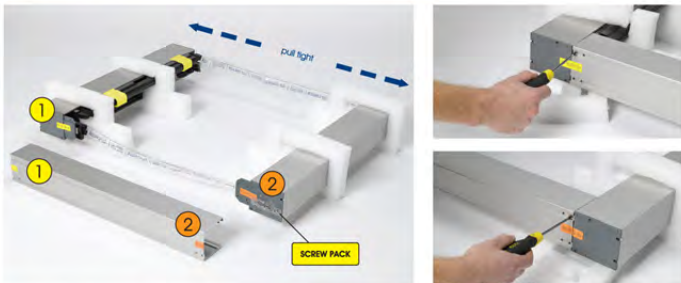


# S1 Assembly Instructions

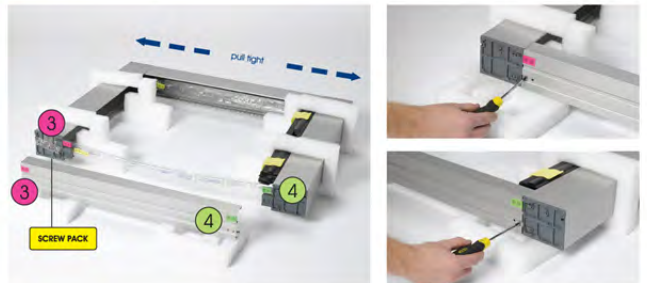
## INITIAL UNPACKING



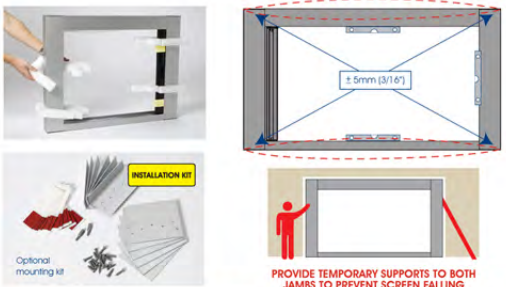
## ATTACH HEAD



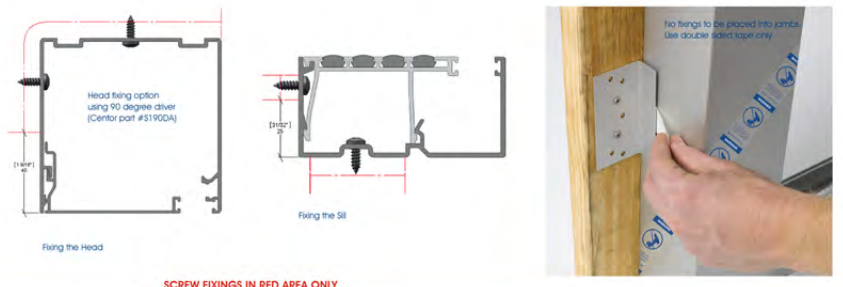
## ATTACH SILL



## STAND UP & SQUARE UP FRAME IN OPENING



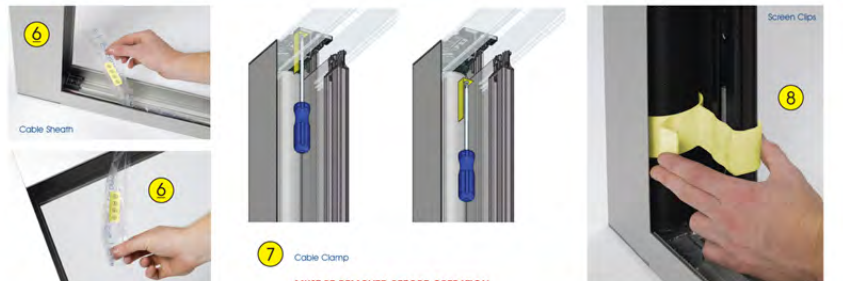
## FIXING OFF THE SCREEN



## APPLY TENSION



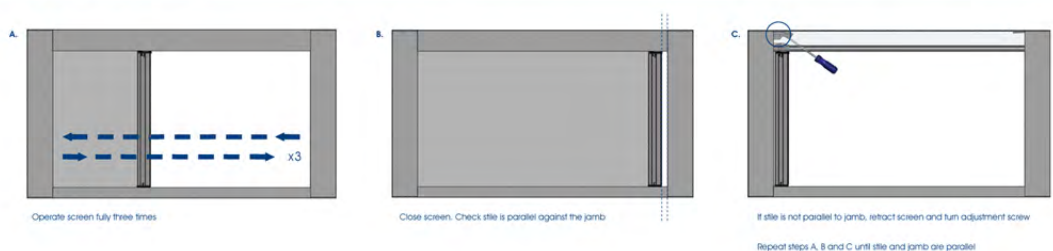
## REMOVE FINAL PACKAGING



## OPERATE SCREEN



## LATERAL ADJUSTMENT IF NECESSARY



FITTING COVERS



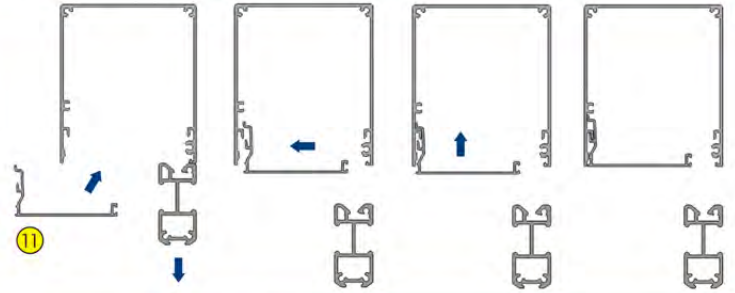
SILL COVER



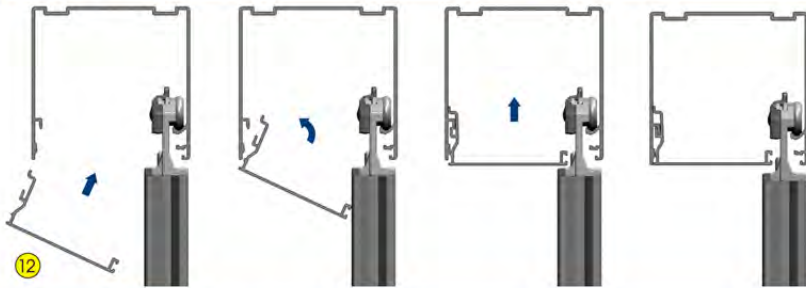
JAMB STOP (SINGLE SCREEN ONLY)



JAMB COVERS



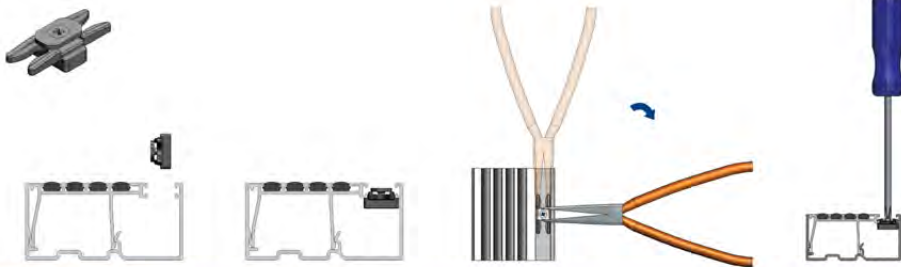
HEAD COVERS



STILE COVERS



DOOR STOP (DOUBLE SCREEN ONLY)



SILL GAP SEAL (OPTIONAL)



HEAD/JAMB COVER REMOVAL



SILL COVER REMOVAL

